

# The RBT-070 Thin Client

*Faster, Smaller, Cooler*

## Overview

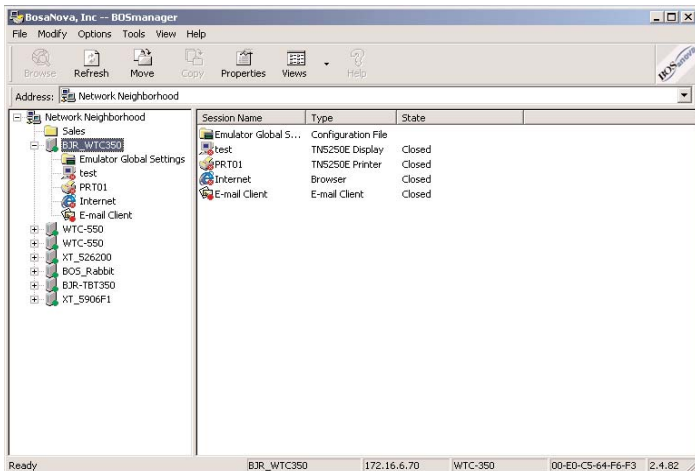
The RBT Series delivers on the promise of increased performance and low cost in a compact package. Assembled in the USA, the RBT Series weighs less than 1lb allowing you flexible mounting options and lower shipping costs. The robust and fan-less construction allows for quiet and reliable operation.

The high speed AMD Geode™ GX 533 processor provides users with exceptional performance and low power consumption within a small footprint.

## Enterprise Class Remote Administration

The RBT-070 Thin Client is simple to configure either locally or remotely using the BOSmanager, which enables the following tasks:

- Complete terminal configuration from a central location
- User lock-out from configuration changes
- Scheduling of firmware updates
- Cloning of user environments
- Control over which applications run on a particular terminal



The RBT-070 Thin Client is simple to configure either locally or remotely using the BOSmanager.



## Benefits:

- Industry standard OS (CE 5.0 Pro)
- Small form factor for space-saving, desktop and mounted deployments
- 802.11 b/g wireless ready
- Biometric support for enhanced security
- SNMP based management software included at no charge
- 3-year advance exchange warranty



The RBT Series are 200% faster, 30% smaller, consume less than half the power and run 30 degrees cooler than the other "Mini" or Turtle shell type thin clients!

# The RBT-070 Thin Client

*Faster, Smaller, Cooler*

## Options

Part Number	2070
Standard Flash/Ram	64MB/128MB (Flash/Ram)
Standard Client Software	
ICA	Version 9
RDP	5.5
Propalms	•
CrossRun	•

## Hardware Configuration

Form Factor	Compact stand-alone metal case
CPU	AMD Geode™ GX 533
Audio	
Mic In/Line Out	•
Internal Speaker	•
Networking	Autosensing, 10/100 Ethernet, RJ-45, WakeOnLAN, PXE boot, USB 802.11 b/g support
I/O and Expansion	
USB Ports – Type 1.1	4
Physical Specifications	
Dimensions	5.5" W x 1.4" H x 5.1" D 140mm x 35 mm x 130 mm
Base Weight	.88 lbs., excluding external AC/DC adaptor
Environmental	
Operating Temperature	0° ~ 40°C 32° ~ 104°F
Operating Humidity	0% ~ 90%
Operating Altitude	0-20,000 ft (0-6,096 m)
Power Requirements	DC12V, 1.2A, 8W

## Software Configuration

Operating System	CE 5.0 Pro
Security Features	Read-only file system, locked-down user account, administrative passwords
Client Software	
Citrix ICA	•
Secure Gateway	•
VNC Shadowing	•
BOSmanager	•
ThinPrint	•
Language Support	US, UK English, Spanish, Italian, German, French, and 30 more including Eastern Europe
Special Features	Autostart/auto-restart connection, multiple level lock-down user interface

## Ordering Information

PID	Description
2070	RBT-070 Thin Client, CE 5.0 Pro, RDP, ICA, AC/DC Adapter, Optical Mouse, USB to PS2 Adapter
9001	USB to Centronics Parallel
9003	VESA Mounting Bracket
9005	USB 802.11 B/G wireless adapter
8104b	104-key PC Keyboard
8122b	122-key Driverless PC Keyboard

Authorized Distributor:

 propalms



**BOSaNOVA, Inc.** Phone: 866-865-5250 Email: sales@bosanova.net Web: www.bosanova.net

**BOSaNOVA LTD (Europe)** Phone: +44 1509 276252 Email: sales@bosanova.co.uk