

# The RBT-366 Thin Client

*Faster, Smaller, Cooler*

## Overview

The RBT Series delivers on the promise of increased performance and low cost in a compact package. Assembled in the USA, the RBT Series weighs less than 1lb allowing you flexible mounting options and lower shipping costs. The robust and fan-less construction allows for quiet and reliable operation.

The RBT Series are 200% faster, 30% smaller, consume less than half the power and run 30 degrees cooler than the other "Mini" or Turtle shell type thin clients!

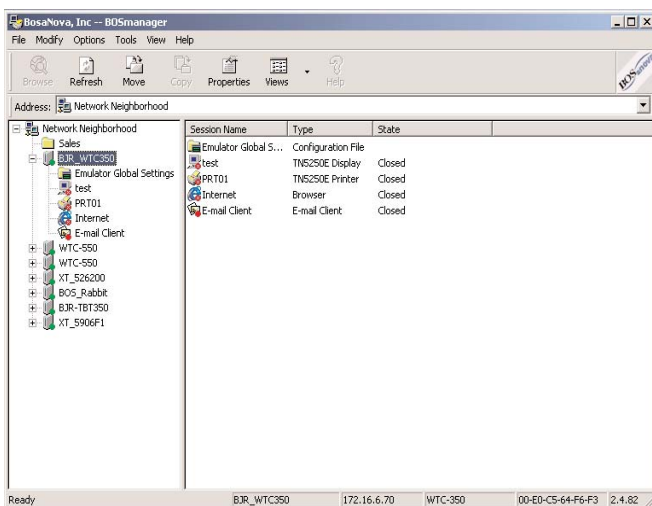
## Versatile Operating Environment

The RBT-366 supports three modes of operation:

**TBT Mode** - Text based setup with startup wizard (no mouse required), terminal green screen with auto start and auto-reconnect, 122 key keyboard support, Function key macro support and split screen.

**WBT Mode** - Windows based Terminal mode, where the terminal behaves like a CE.NET device with full screen applications, GUI 5250/3270, Terminal Server access, Citrix or Propalms which auto start and auto-reconnect.

**Desktop Mode** - Windows 2000 type user interface provides access to all applications in a windowing environment.



The RBT-366 Thin Client is simple to configure either locally or remotely using the BOSmanager.



## Benefits:

- The RBT-366 outperforms similar products by more than three times.
- Industry standard OS (Linux 2.6 Kernel)
- Small form factor for space-saving, desktop and mounted deployments
- Advanced emulation with 8 5250 sessions. Split Screen, Rule Cursor, macro support, multi host, GUI, 122-key keyboard support
- Available option for USB wireless networking
- 3-year advance exchange warranty



# The RBT-366 Thin Client

*Faster, Smaller, Cooler*

## Options

Part Number	7366
Standard Flash/Ram	64MB/128MB (Flash/Ram)
Standard Client Software	
ICA	Version 9
RDP	5.2
Host Access	Supports 8 TN5250e and TN3270e sessions, Telnet with SSH, Wyse 60, Xterm R6, VT100, VT220 and VT400
SSGD-EE	•
Propalms TSE	•
CrossRun	•

## Software Configuration

Operating System	Linux 2.6 Kernel
Security Features	Read-only file system, locked-down user account, administrative passwords
Client Software	
Citrix ICA	•
NX Client	•
Secure Gateway	•
VNC Shadowing	•
BOSmanager	•
ThinPrint	•
Language Support	US, UK English, Spanish, Italian, German, French, and 30 more including Eastern Europe
Special Features	Autostart/auto-restart connection, multiple level lock-down user interface

## Management

BOSmanager Support	•
Push/Pull Updates	•
VNC	•
Software/Configuration Cloning	•

## Hardware Configuration

Form Factor	Compact stand-alone metal case
CPU	AMD Geode™ GX 533
Audio	
Mic In/Line Out	•
Internal Speaker	•
Networking	Autosensing, 10/100 Ethernet, RJ-45, WakeOnLAN, PXE boot, USB 802.11 b/g support
I/O and Expansion	
USB Ports – Type 1.1	4
Physical Specifications	
Dimensions	5.5" W x 1.4" H x 5.1" D 140mm x 35 mm x 130 mm
Base Weight	.88 lbs., excluding external AC/DC adaptor
Environmental	
Operating Temperature	0° ~ 40°C 32° ~ 104°F
Operating Humidity	0% ~ 90%
Operating Altitude	0-20,000 ft (0-6,096 m)
Power Requirements	DC12V, 1.2A, 8W

## Ordering Information

PID	Description
7366	RBT-366 Thin Client, Linux, 5250, RDP, ICA, AC/DC Adapter, USB to PS2 Adapter
MS001	Optical Mouse
9001	USB to Centronics Parallel
9003	VESA Mounting Bracket
9004	USB 802.11 B/G wireless adapter
8104b	104-key PC Keyboard
8122b	122-key Driverless PC Keyboard

Authorized Distributor:



**BOSaNOVA, Inc.** Phone: 866-865-5250 Email: sales@bosanova.net Web: www.bosanova.net

**BOSaNOVA LTD (Europe)** Phone: +44 1509 276252 Email: sales@bosanova.co.uk